

P R O D U C T _ I N F O R M A T I O N

CONCRETE PUMPS





CEO Greetings

TB1's business philosophy is always to be "Helping customers to succeed". We commit to the development of the construction industry by establishing strategic cooperation with global agents and customers.

In order to create new value for TB1 and to make a professional construction machinery company, all our employees, including myself, will work hard. And all our employees will provide differentiated service and solutions to truly satisfy our customers.

Apart from supplying best quality products, we also propose our technical and management solutions. And through continuous R&D and investment, we will try to satisfy the expectations of our customers through advance technology and innovative products.

We appreciate our customers who have made make TB1 the success it is today and we will continue to move forward to satisfy our customers in every aspect possible.

- 2007. 03 TB1 concrete pump company was founded.
- 06 Manufacturing 1st machine TCP Serie #1.
- 2009. 05 Built up new factory.
- 2010. 02 Acquired Venture business certification.
- 2011. 09 Manufacturing TCP Serie #100.
- 11 Won 3 million dollars export award by KITA.
- 2014. 05 Manufacturing TCP Serie #200.
- 05 Research & Development Center.
- 06 Acquired ISO 9001 certificate of Concrete pump.
- 07 Established TB1 Corp.
- 2015. 04 Acquired MAIN-BIZ certification.

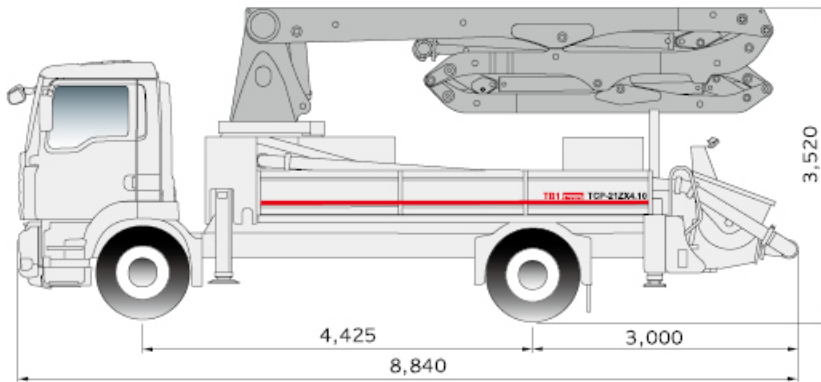
02 CEO Greetings

- 04 Concrete Pump **TCP-21ZX4.10**
- 06 Concrete Pump **TCP-28ZX4.10**
- 08 Concrete Pump **TCP-33ZX4.15**
- 10 Concrete Pump **TCP-36RX4.15**
- 12 Concrete Pump **TCP-37ZX4.15**
- 14 Concrete Pump **TCP-40RX4.15**
- 16 Concrete Pump **TCP-40RZ5.15**
- 18 Concrete Pump **TCP-43ZR5.15**
- 20 Concrete Pump **TCP-49RZ5.15**
- 22 Concrete Pump **TCP-52RZ5.15**
- 24 Concrete Pump **TCP-52RZ6.15**
- 26 Concrete Pump **TCP-56RZ5.18**
- 28 **Concrete parts**
- 30 Line Pump **TLP-060H/090H**
- 31 Trailer Pump **TTP-090T/110T**
- 32 Placing Boom **TPB-24ST/29ST/33ST**

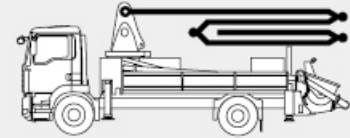
CONCRETE PUMPS

 **TCP-21ZX4.10**

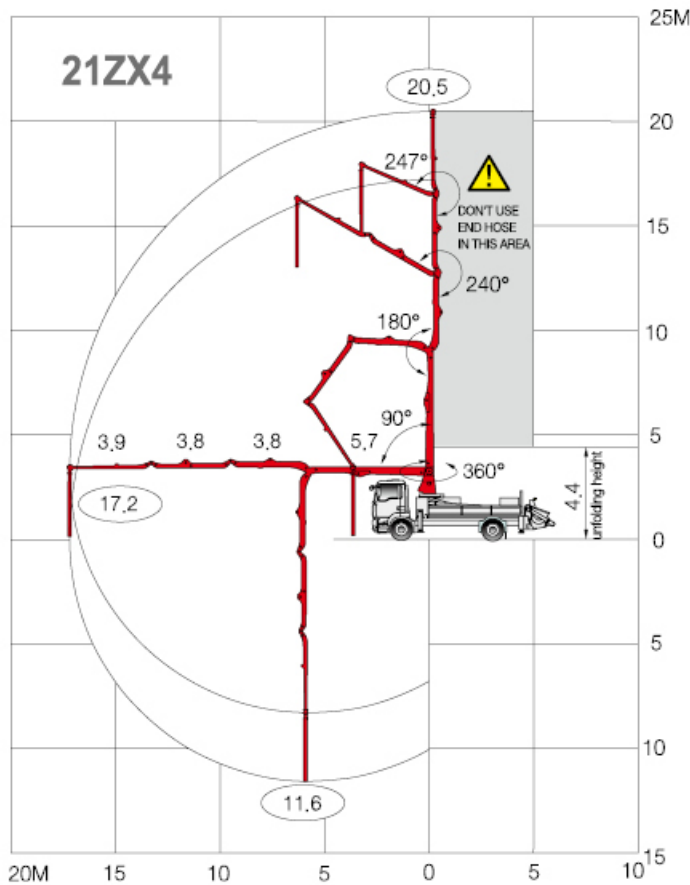




TCP-21ZX4.10



weight and dimension figures here are subject to change on various chassis option and additional axle application etc.



General Specification

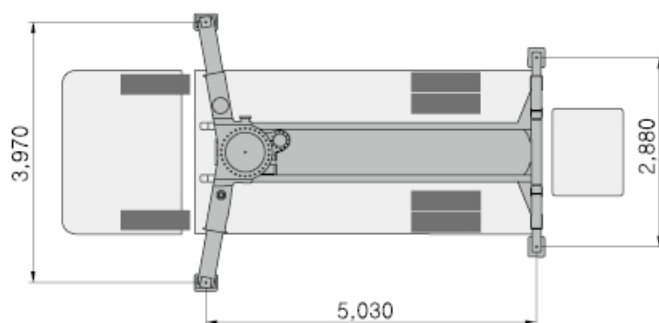
Length	8,840	mm
Width	2,500	mm
Height	3,520	mm
Front axle weight	5,650	kg
Rear axle weight	9,340	kg
Approx total weight	14,990	kg

Boom Specification

Folding type	4-section Z	
Vertical height	20.5	m
Horizontal reach	17.2	m
Unfolding height	4.0	m
Reach depth	11.6	m
End hose Length	3	mm
PipeLine	125	m
1st section	5.7	m
2nd section	3.8	m
3rd section	3.8	m
4th section	3.9	°
Rotation	360	m
Outrigger spread - front	4.0	m
- rear	2.9	m

Pump Specification

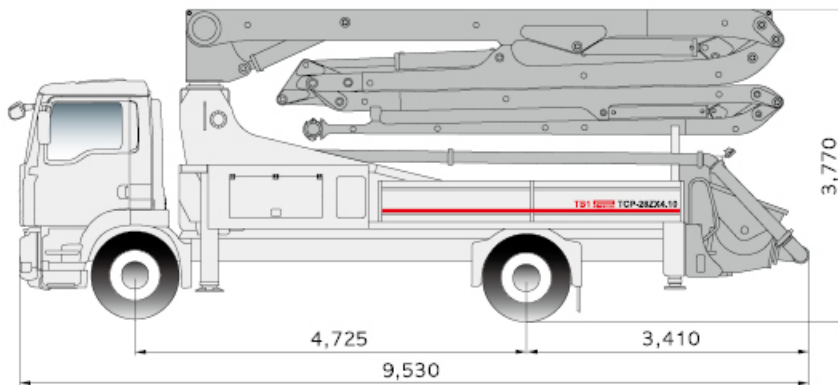
Control system	open	
Output - rod	100	m ³ /h
- piston	68	m ³ /h
Pressure - rod	53.8	bar
- piston	80.1	bar
Delivery cylinder diameter	230	mm
Stroke length	1,400	mm
Strokes/min. - rod/piston	28.8/19.3	N
Main pump	Rexroth	
System pressure	350	bar
Hopper capacity	400	liter
Water Pump	20	bar
Water tank	500	liter



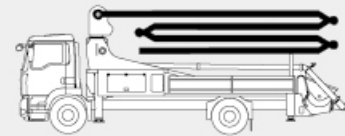
CONCRETE PUMPS

 **TCP-28ZX4.10**

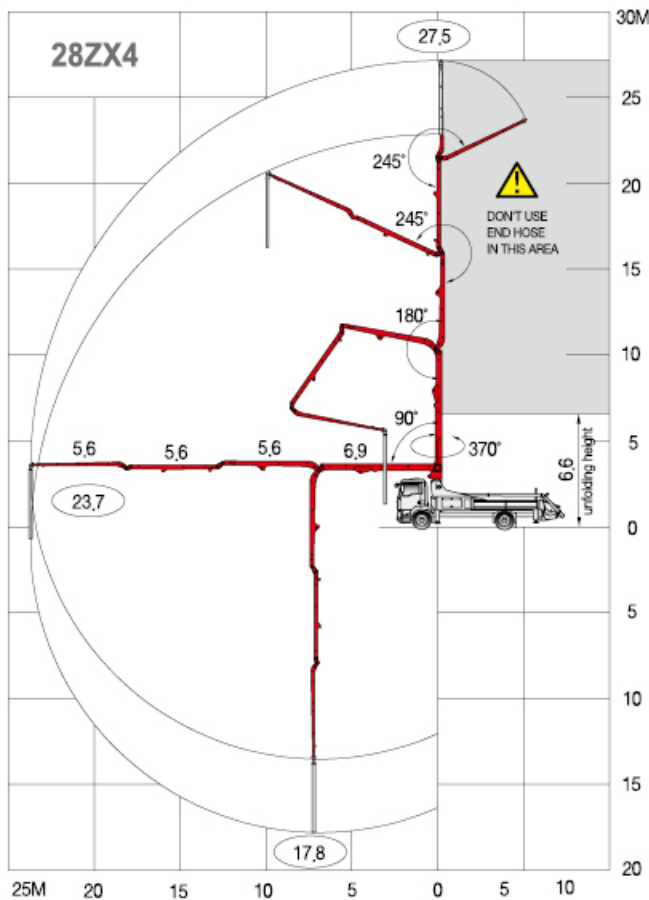




TCP-28ZX4.10



weight and dimension figures here are subject to change on various chassis option and additional axle application etc.



General Specification

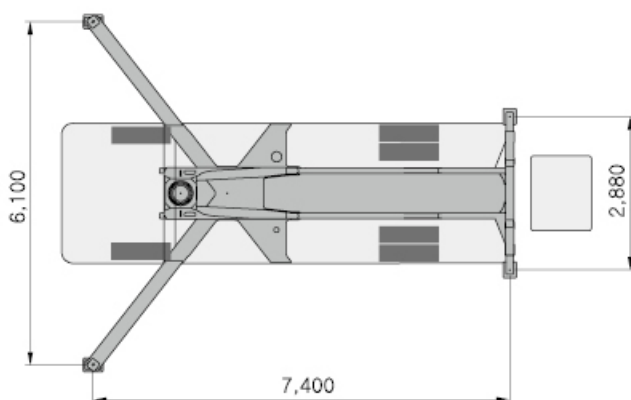
Length	9,530	mm
Width	2,500	mm
Height	3,770	mm
Front axle weight	6,480	kg
Rear axle weight	11,190	kg
Approx total weight	17,670	kg

Boom Specification

Folding type	4-section Z	
Vertical height	27.5	m
Horizontal reach	23.7	m
Unfolding height	6.6	m
Reach depth	17.8	m
End hose Length	4	m
PipeLine	125	mm
1st section	6.9	m
2nd section	5.6	m
3rd section	5.6	m
4th section	5.6	m
Rotation	370	°
Outrigger spread - front	6.1	m
- rear	2.9	m

Pump Specification

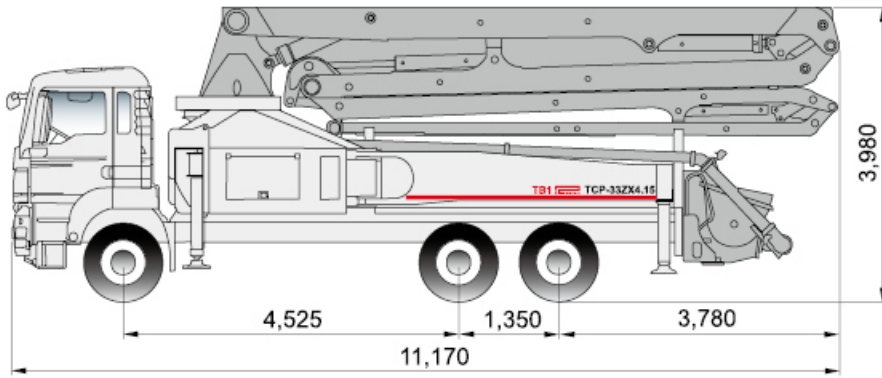
Control system	open	
Output - rod	100	m ³ /h
- piston	68	m ³ /h
Pressure - rod	53.8	bar
- piston	80.1	bar
Delivery cylinder diameter	230	mm
Stroke length	1,400	mm
Strokes/min. - rod/piston	28.8/19.3	N
Main pump	Rexroth	
System pressure	350	bar
Hopper capacity	600	liter
Water Pump	20	bar
Water tank	500	liter



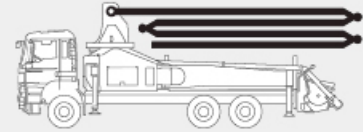
CONCRETE PUMPS

 **TCP-33ZX4.15**





TCP-33ZX4.15



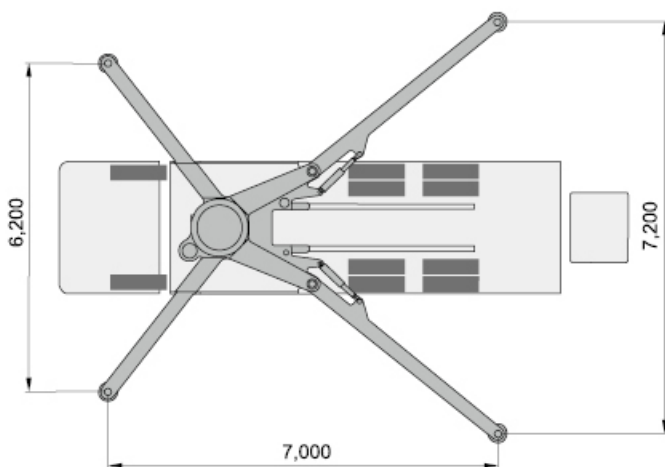
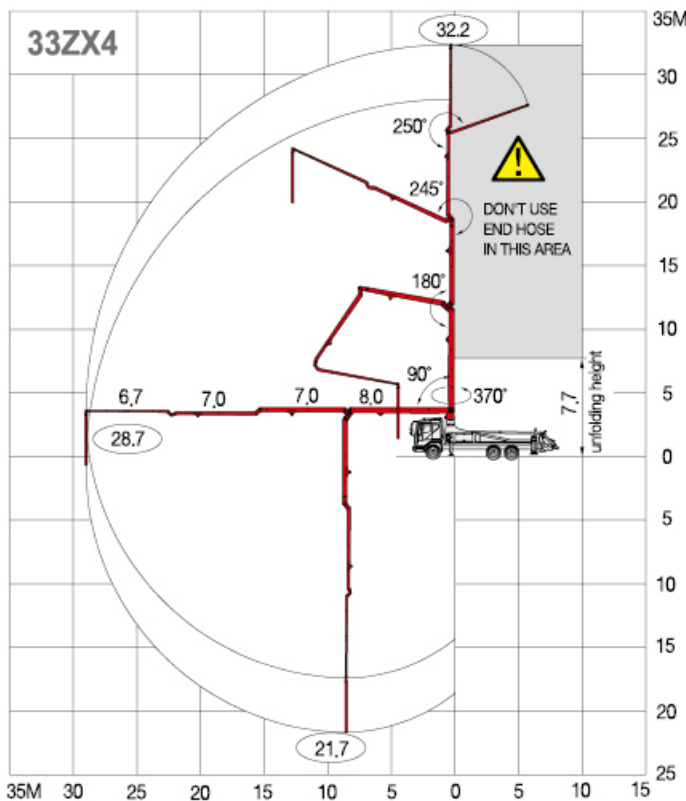
weight and dimension figures here are subject to change on various chassis option and additional axle application etc.

General Specification

Length	11,170	mm
Width	2,500	mm
Height	3,980	mm
Front axle weight	5,720	kg
Rear axle weight	18,390	kg
Approx total weight	24,110	kg

Boom Specification

Folding type	4-section Z	
Vertical height	32.2	m
Horizontal reach	28.7	m
Unfolding height	7.7	m
Reach depth	21.7	m
End hose Length	4	m
PipeLine	125	mm
1st section	8.0	m
2nd section	7.0	m
3rd section	7.0	m
4th section	6.7	m
Rotation	370	°
Outrigger spread - front	6.2	m
- rear	7.2	m



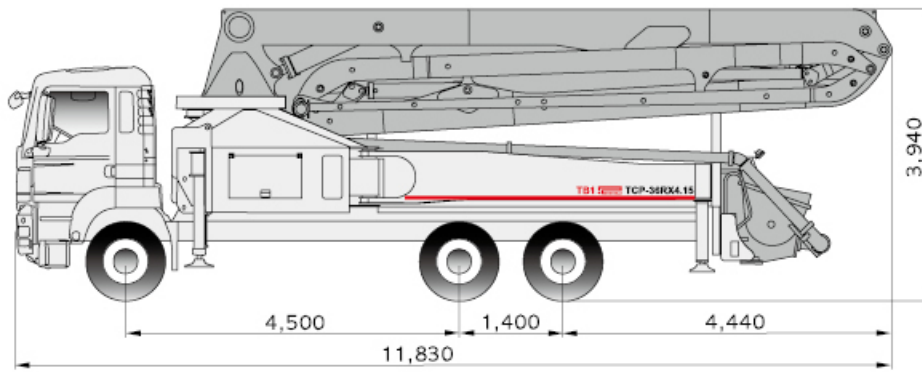
Pump Specification

Control system	open	
Output - rod	155	m ³ /h
- piston	97	m ³ /h
Pressure - rod	69.5	bar
- piston	111.8	bar
Delivery cylinder diameter	230	mm
Stroke length	2,100	mm
Strokes/min. - rod/piston	29.7/18.5	N
Main pump	Rexroth	
System pressure	350	bar
Hopper capacity	600	liter
Water Pump	20	bar
Water tank	500	liter

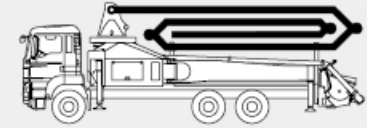
CONCRETE PUMPS

 **TCP-36RX4.15**

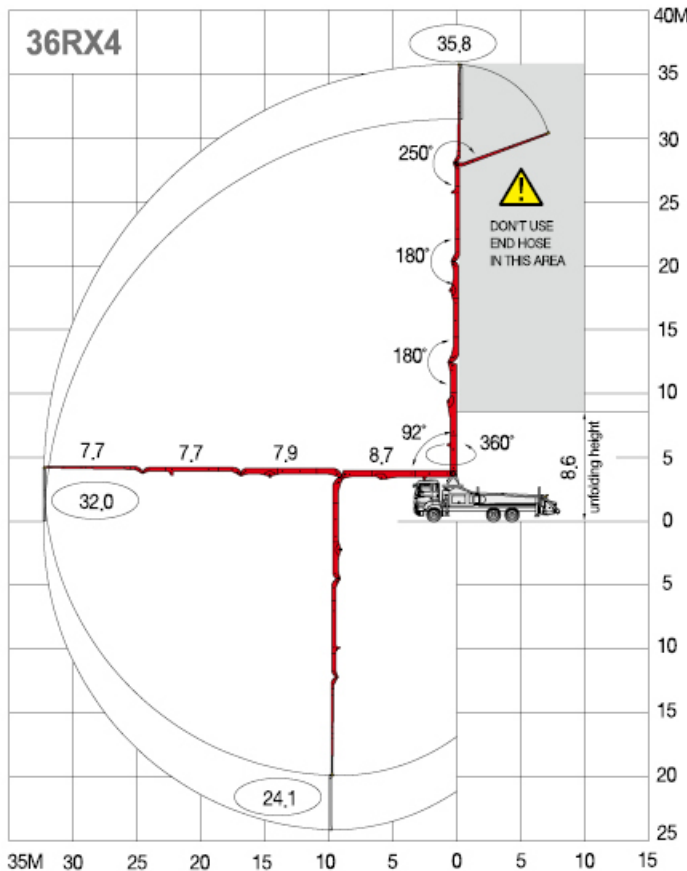




TCP-36RX4.15



weight and dimension figures here are subject to change on various chassis option and additional axle application etc.

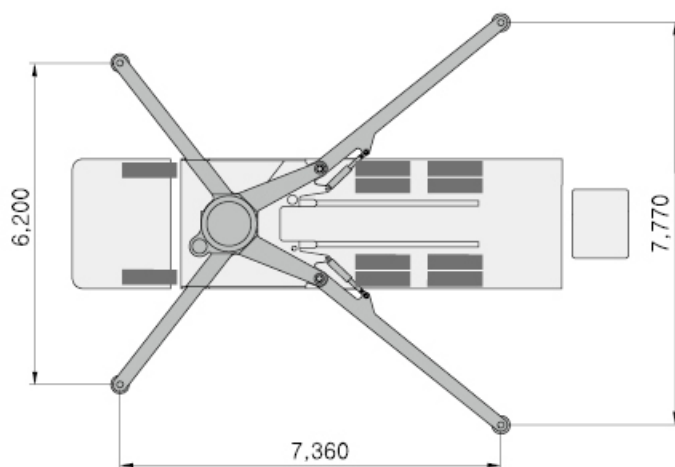


General Specification

Length	11,830	mm
Width	2,500	mm
Height	3,940	mm
Front axle weight	7,100	kg
Rear axle weight	19,800	kg
Approx total weight	26,900	kg

Boom Specification

Folding type	4-section Roll	
Vertical height	35.8	m
Horizontal reach	32.0	m
Unfolding height	8.6	m
Reach depth	24.1	m
End hose Length	4	m
PipeLine	125	mm
1st section	8.7	m
2nd section	7.9	m
3rd section	7.7	m
4th section	7.7	m
Rotation	360	°
Outrigger spread - front	6.2	m
- rear	7.8	m



Pump Specification

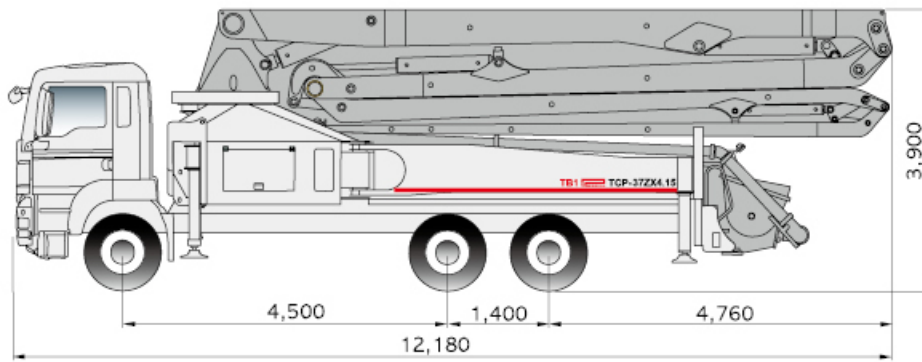
Control system	open	
Output - rod	155	m ³ /h
- piston	97	m ³ /h
Pressure - rod	69.5	bar
- piston	111.8	bar
Delivery cylinder diameter	230	mm
Stroke length	2,100	mm
Strokes/min. - rod/piston	29.7/18.5	N
Main pump	Rexroth	
System pressure	350	bar
Hopper capacity	600	liter
Water Pump	20	bar
Water tank	500	liter

CONCRETE PUMPS

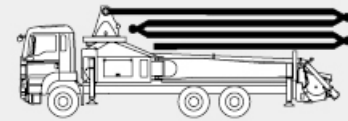


TCP-37ZX4.15

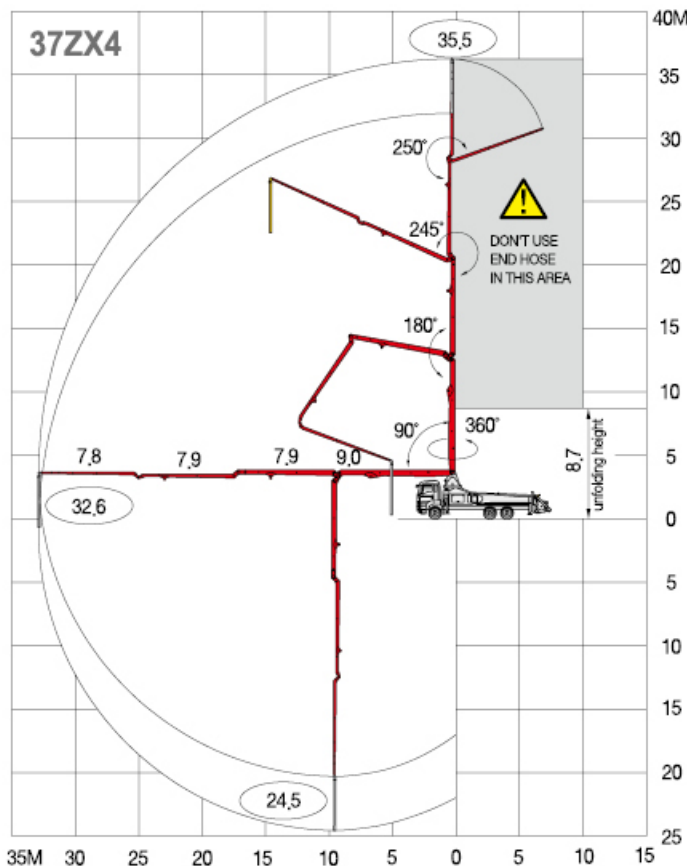




TCP-37ZX4.15



weight and dimension figures here are subject to change on various chassis option and additional axle application etc.

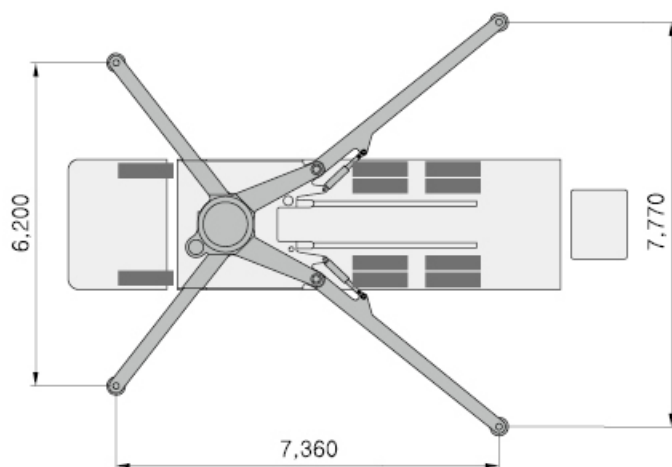


General Specification

Length	12,180	mm
Width	2,500	mm
Height	3,900	mm
Front axle weight	7,220	kg
Rear axle weight	20,250	kg
Approx total weight	27,470	kg

Boom Specification

Folding type	4-section Z
Vertical height	36.5 m
Horizontal reach	32.6 m
Unfolding height	8.7 m
Reach depth	24.5 m
End hose Length	4 m
PipeLine	125 mm
1st section	9.0 m
2nd section	7.9 m
3rd section	7.9 m
4th section	7.8 m
Rotation	360 °
Outrigger spread - front	6.2 m
- rear	9.2 m



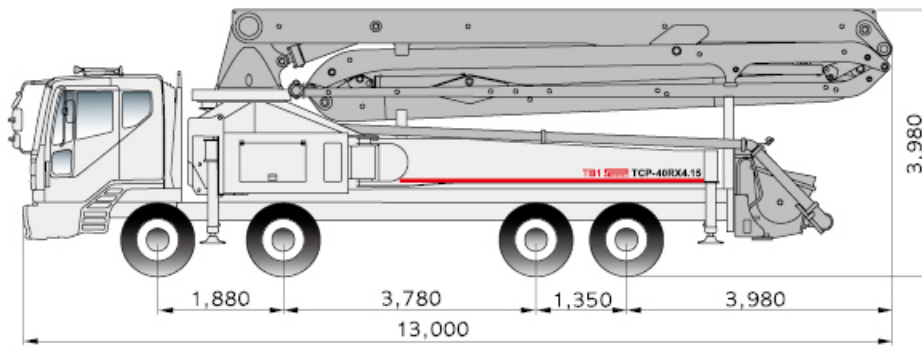
Pump Specification

Control system	open
Output - rod	155 m ³ /h
- piston	97 m ³ /h
Pressure - rod	69.5 bar
- piston	111.8 bar
Delivery cylinder diameter	230 mm
Stroke length	2,100 mm
Strokes/min. - rod/piston	29.7/18.5 N
Main pump	Rexroth
System pressure	350 bar
Hopper capacity	600 liter
Water Pump	20 bar
Water tank	500 liter

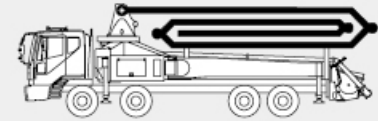
CONCRETE PUMPS

 **TCP-40RX4.15**

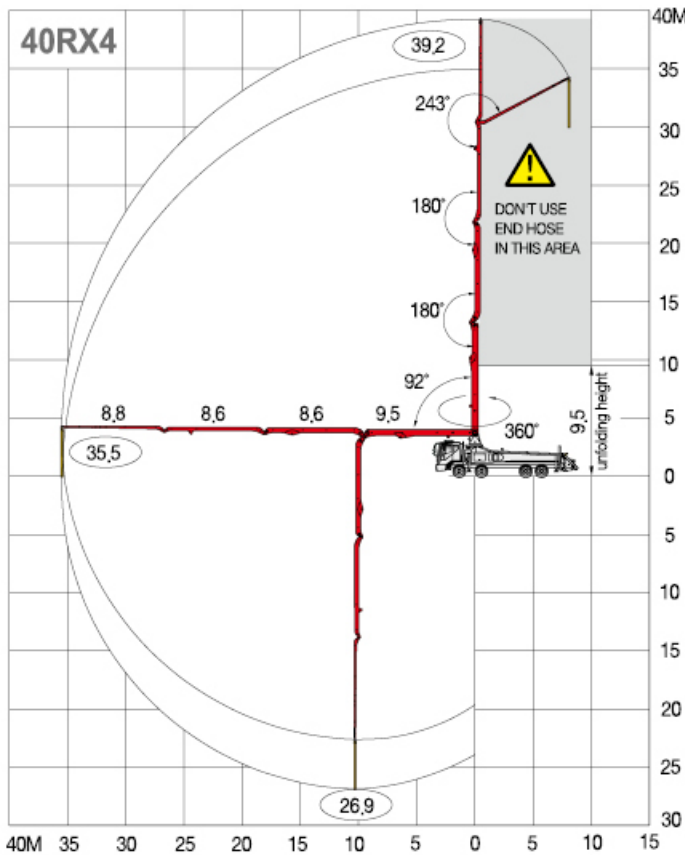




TCP-40RX4.15



weight and dimension figures here are subject to change on various chassis option and additional axle application etc.



General Specification

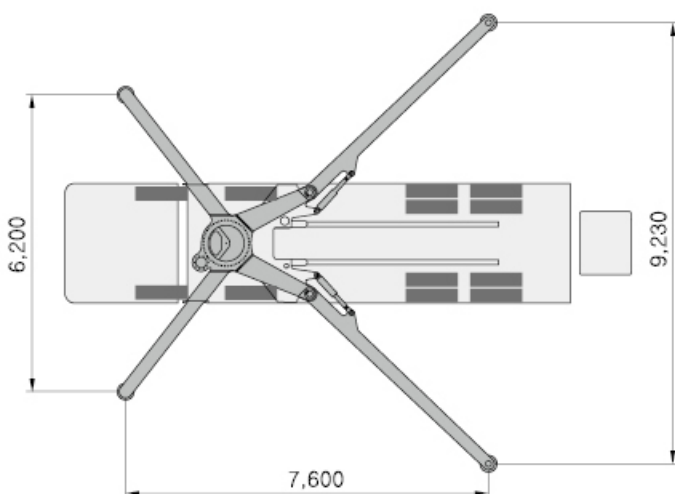
Length	13,000	mm
Width	2,500	mm
Height	3,980	mm
Front axle weight	10,540	kg
Rear axle weight	18,390	kg
Approx total weight	28,930	kg

Boom Specification

Folding type	4-section Roll	
Vertical height	39.2	m
Horizontal reach	35.5	m
Unfolding height	9.5	m
Reach depth	26.9	m
End hose Length	4	m
PipeLine	125	mm
1st section	9.5	m
2nd section	8.6	m
3rd section	8.6	m
4th section	8.8	m
Rotation	360	°
Outrigger spread - front	6.2	m
- rear	9.2	m

Pump Specification

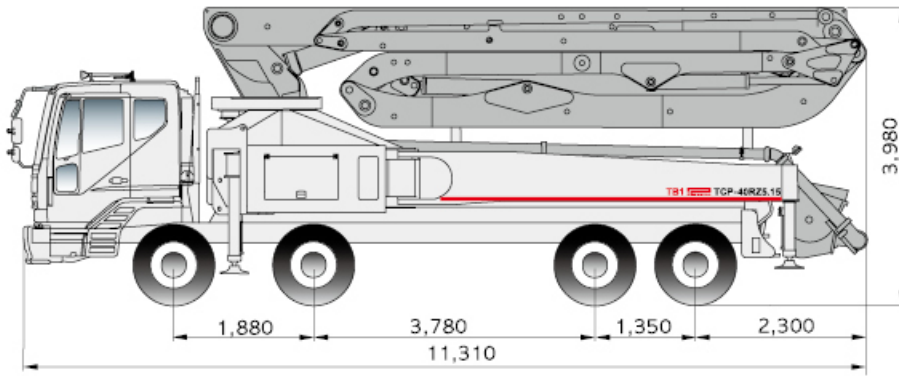
Control system	open	
Output - rod	155	m ³ /h
- piston	97	m ³ /h
Pressure - rod	69.5	bar
- piston	111.8	bar
Delivery cylinder diameter	230	mm
Stroke length	2,100	mm
Strokes/min. - rod/piston	29.7/18.5	N
Main pump	Rexroth	
System pressure	350	bar
Hopper capacity	600	liter
Water Pump	20	bar
Water tank	500	liter



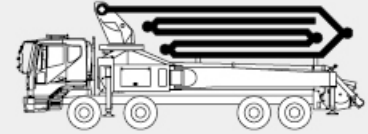
CONCRETE PUMPS

 **TCP-40RZ5.15**

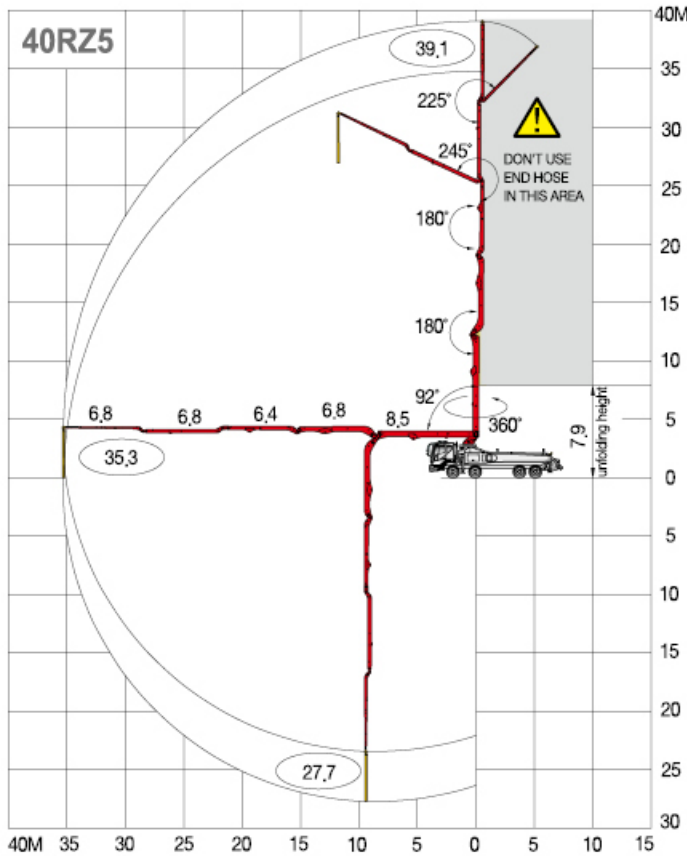




TCP-40RZ5.15



weight and dimension figures here are subject to change on various chassis option and additional axle application etc.



General Specification

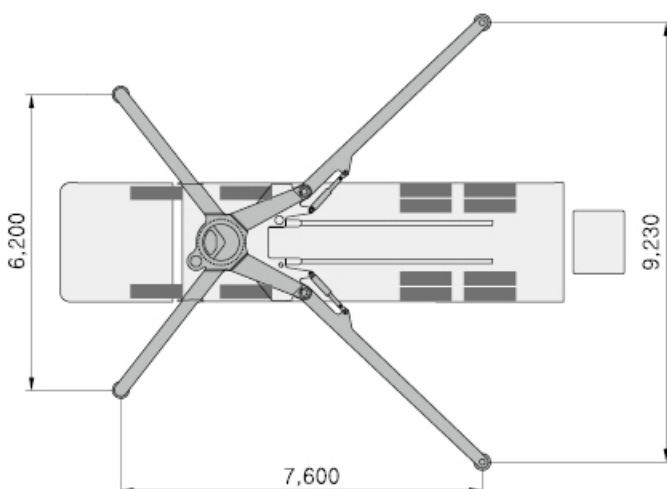
Length	11,310	mm
Width	2,500	mm
Height	3,980	mm
Front axle weight	11,310	kg
Rear axle weight	17,990	kg
Approx total weight	29,300	kg

Boom Specification

Folding type	5-section RZ	
Vertical height	39.1	m
Horizontal reach	35.3	m
Unfolding height	7.9	m
Reach depth	27.7	m
End hose Length	4	m
PipeLine	125	mm
1st section	8.5	m
2nd section	6.8	m
3rd section	6.4	m
4th section	6.8	m
5th section	6.8	m
Rotation	360	°
Outrigger spread - front	6.2	m
- rear	9.2	m

Pump Specification

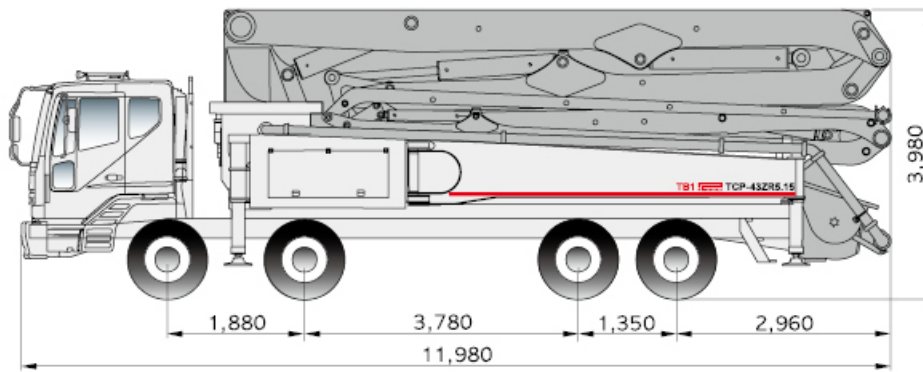
Control system	open	
Output - rod	155	m ³ /h
- piston	97	m ³ /h
Pressure - rod	69.5	bar
- piston	111.8	bar
Delivery cylinder diameter	230	mm
Stroke length	2,100	mm
Strokes/min. - rod/piston	29.7/18.5	N
Main pump	Rexroth	
System pressure	350	bar
Hopper capacity	600	liter
Water Pump	20	bar
Water tank	500	liter



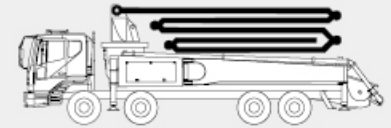
CONCRETE PUMPS

 **TCP-43ZR5.15**

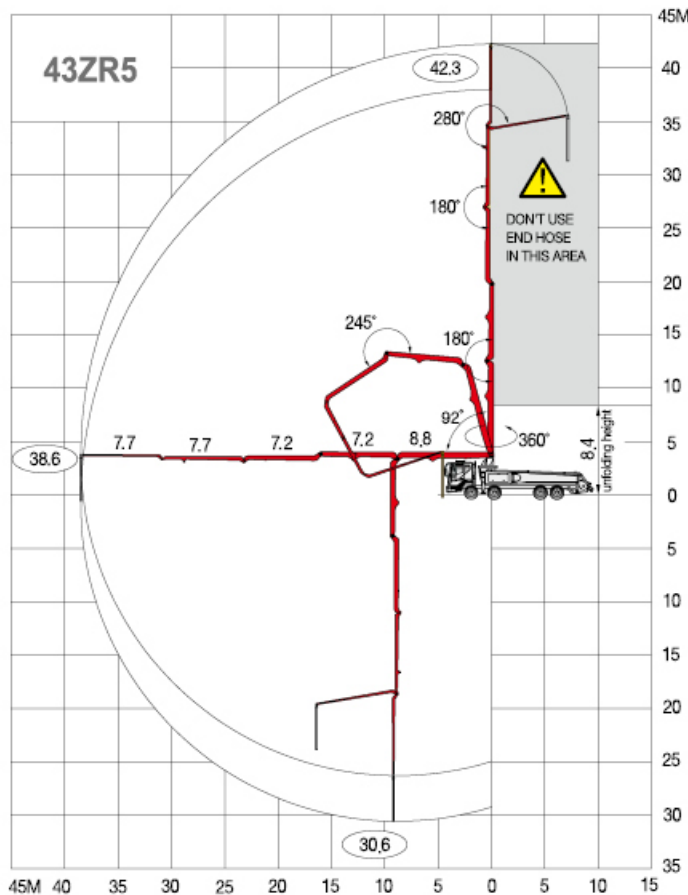




TCP-43ZR5.15



weight and dimension figures here are subject to change on various chassis option and additional axle application etc.



General Specification

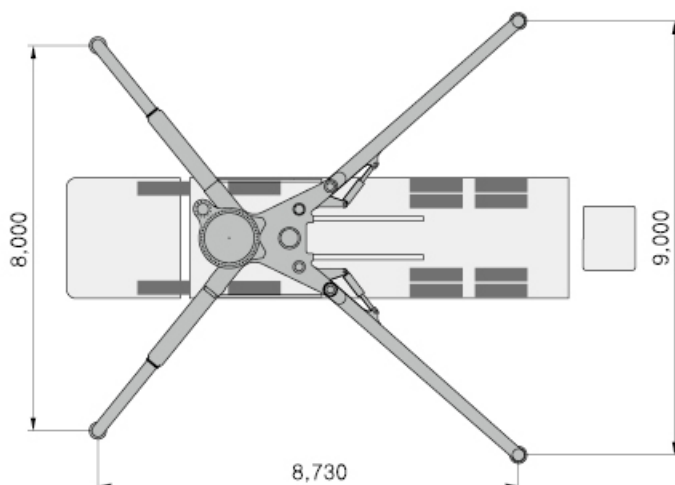
Length	11,980	mm
Width	2,500	mm
Height	3,980	mm
Front axle weight	12,590	kg
Rear axle weight	20,910	kg
Approx total weight	33,500	kg

Boom Specification

Folding type	5-section ZR	
Vertical height	42.3	m
Horizontal reach	38.6	m
Unfolding height	8.4	m
Reach depth	30.6	m
End hose Length	4	m
PipeLine	125	mm
1st section	8.8	m
2nd section	7.2	m
3rd section	7.2	m
4th section	7.7	m
5th section	7.7	m
Rotation	360	°
Outrigger spread - front	8.0	m
- rear	9.0	m

Pump Specification

Control system	open	
Output - rod	155	m ³ /h
- piston	97	m ³ /h
Pressure - rod	69.5	bar
- piston	111.8	bar
Delivery cylinder diameter	230	mm
Stroke length	2,100	mm
Strokes/min. - rod/piston	29.7/18.5	N
Main pump	Rexroth	
System pressure	350	bar
Hopper capacity	600	liter
Water Pump	20	bar
Water tank	500	liter

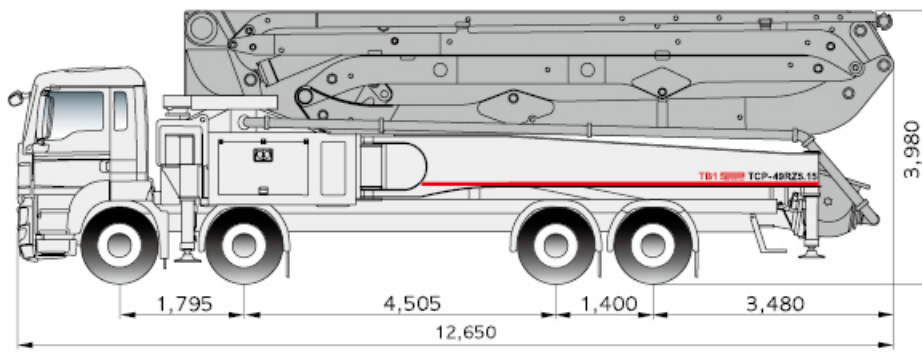


The specification can be changed without any prior notice

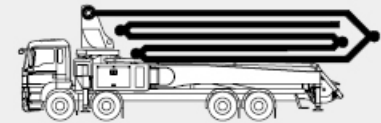
CONCRETE PUMPS

 **TCP-49RZ5.15**

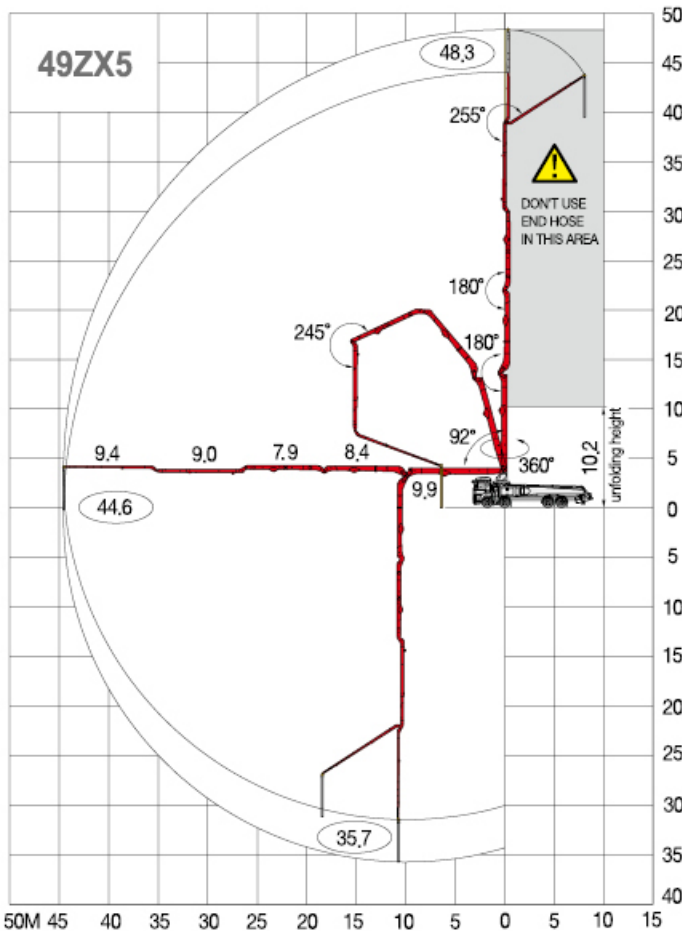




TCP-49RZ5.15



weight and dimension figures here are subject to change on various chassis option and additional axle application etc.



General Specification

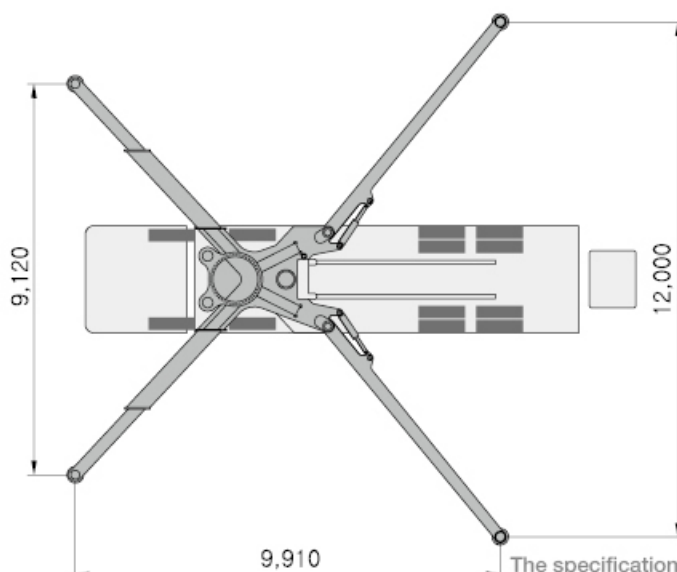
Length	12,650	mm
Width	2,500	mm
Height	3,980	mm
Front axle weight	16,920	kg
Rear axle weight	23,000	kg
Approx total weight	39,920	kg

Boom Specification

Folding type	5-section RZ	
Vertical height	48.3	m
Horizontal reach	44.6	m
Unfolding height	10.2	m
Reach depth	35.7	m
End hose Length	4	m
PipeLine	125	mm
1st section	9.9	m
2nd section	8.4	m
3rd section	7.9	m
4th section	9.0	m
5th section	9.4	m
Rotation	360	°
Outrigger spread - front	9.1	m
- rear	12.0	m

Pump Specification

Control system	open	
Output - rod	155	m ³ /h
- piston	97	m ³ /h
Pressure - rod	69.5	bar
- piston	111.8	bar
Delivery cylinder diameter	230	mm
Stroke length	2,100	mm
Strokes/min. - rod/piston	29.7/18.5	N
Main pump	Rexroth	
System pressure	350	bar
Hopper capacity	600	liter
Water Pump	20	bar
Water tank	500	liter

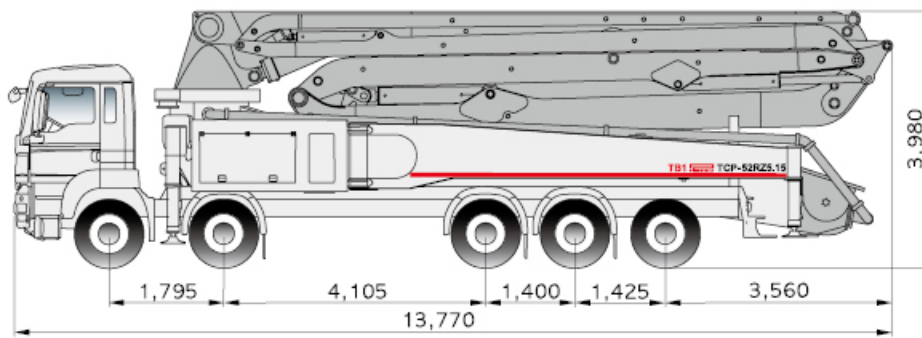


The specification can be changed without any prior notice

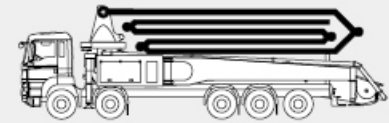
CONCRETE PUMPS

 **TCP-52RZ5.15**

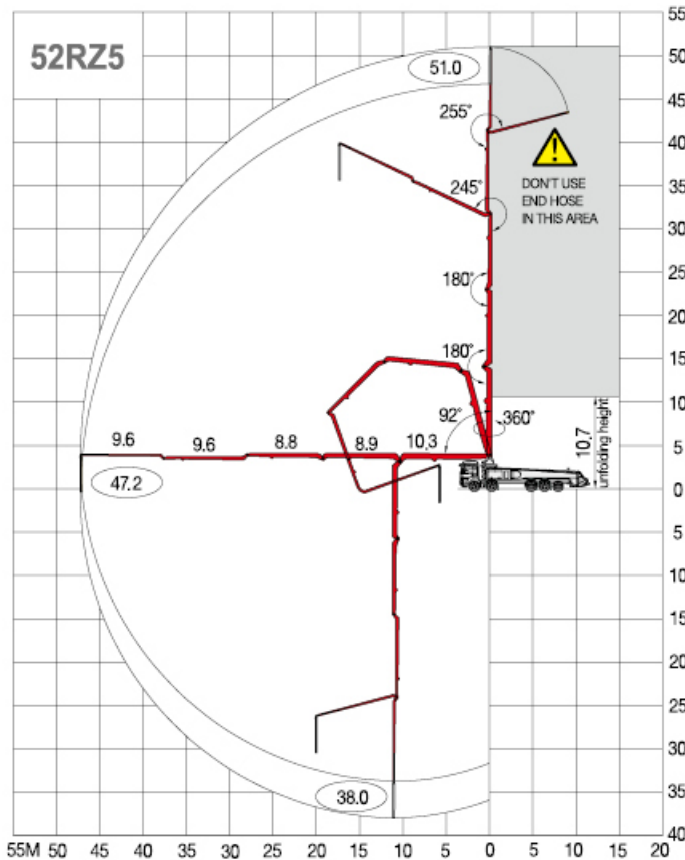




TCP-52RZ5.15



weight and dimension figures here are subject to change on various chassis option and additional axle application etc.



General Specification

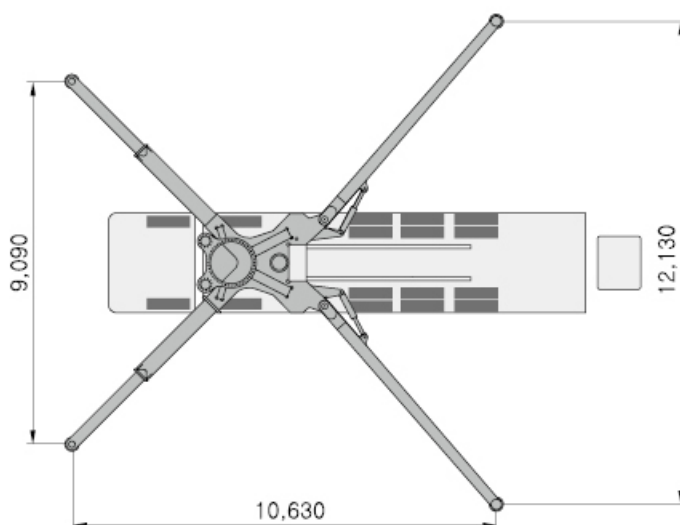
Length	13,770	mm
Width	2,500	mm
Height	3,980	mm
Front axle weight	14,900	kg
Rear axle weight	26,340	kg
Approx total weight	41,240	kg

Boom Specification

Folding type	R-section RZ	
Vertical height	51.0	m
Horizontal reach	47.2	m
Unfolding height	10.7	m
Reach depth	38.0	m
End hose Length	4	m
PipeLine	125	mm
1st section	10.3	m
2nd section	8.9	m
3rd section	8.8	m
4th section	9.6	m
5th section	9.6	m
Rotation	360	°
Outrigger spread - front	9.0	m
- rear	12.1	m

Pump Specification

Control system	open	
Output - rod	155	m ³ /h
- piston	97	m ³ /h
Pressure - rod	69.5	bar
- piston	111.8	bar
Delivery cylinder diameter	230	mm
Stroke length	2,100	mm
Strokes/min. - rod/piston	29.7/18.5	N
Main pump	Rexroth	
System pressure	350	bar
Hopper capacity	600	liter
Water Pump	20	bar
Water tank	500	liter

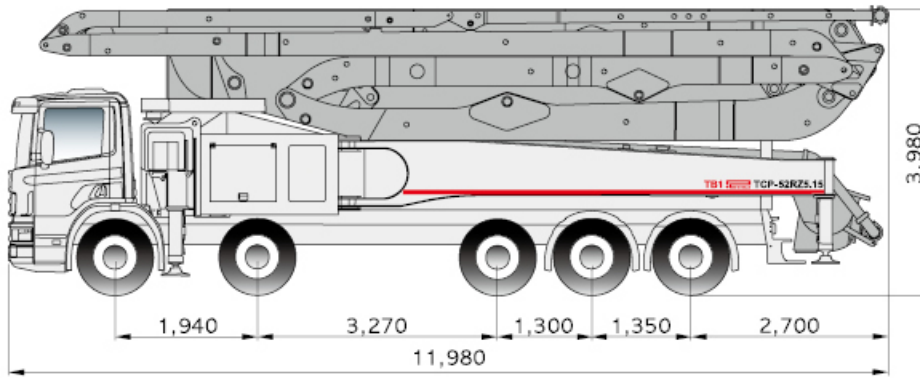


The specification can be changed without any prior notice

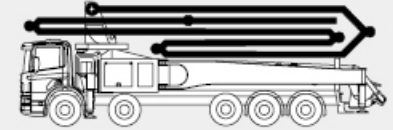
CONCRETE PUMPS

 **TCP-52RZ6.15**





TCP-52RZ6.15



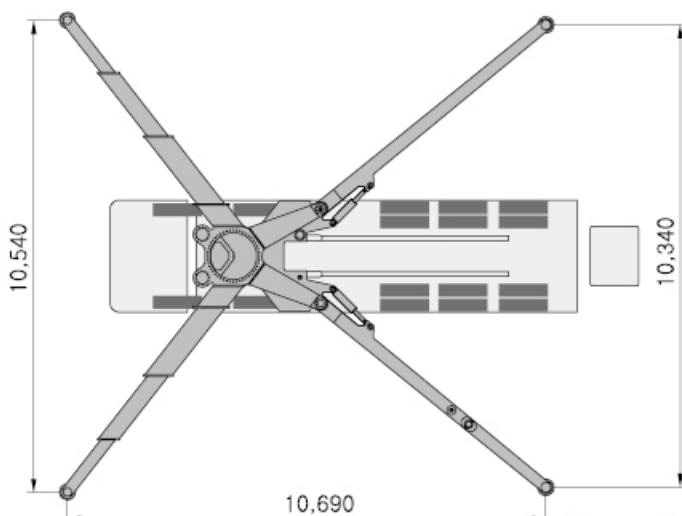
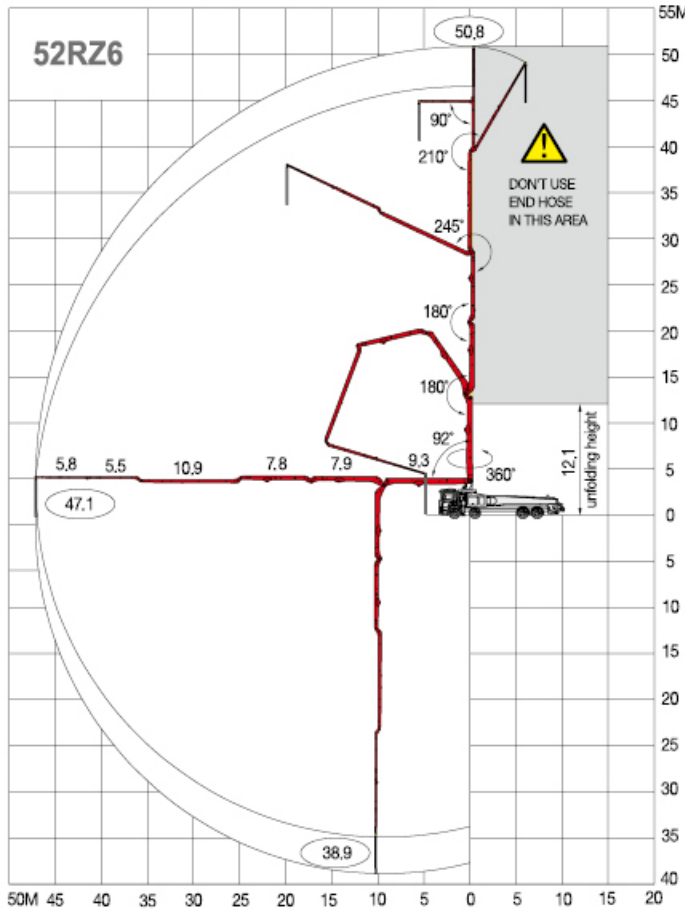
weight and dimension figures here are subject to change on various chassis option and additional axle application etc.

General Specification

Length	11,980	mm
Width	2,500	mm
Height	3,980	mm
Front axle weight	18,550	kg
Rear axle weight	22,040	kg
Approx total weight	40,590	kg

Boom Specification

Folding type	6-section RZ	
Vertical height	50.8	m
Horizontal reach	47.1	m
Unfolding height	12.1	m
Reach depth	38.9	m
End hose Length	4	m
PipeLine	125	mm
1st section	9.3	m
2nd section	7.9	m
3rd section	7.6	m
4th section	10.9	m
5th section	5.5	m
6th section	5.9	m
Rotation	360	°
Outrigger spread - front	10.5	m
- rear	10.3	m



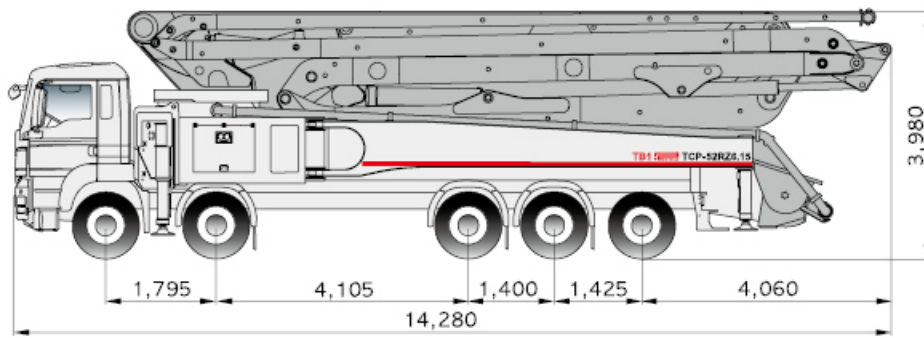
Pump Specification

Control system	open	
Output - rod	155	m ³ /h
- piston	97	m ³ /h
Pressure - rod	69.5	bar
- piston	111.8	bar
Delivery cylinder diameter	230	mm
Stroke length	2100	mm
Strokes/min. - rod/piston	29.7/18.5	N
Main pump	Rexroth	
System pressure	350	bar
Hopper capacity	600	liter
Water Pump	20	bar
Water tank	500	liter

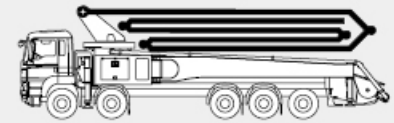
CONCRETE PUMPS

 **TCP-56RZ5.18**

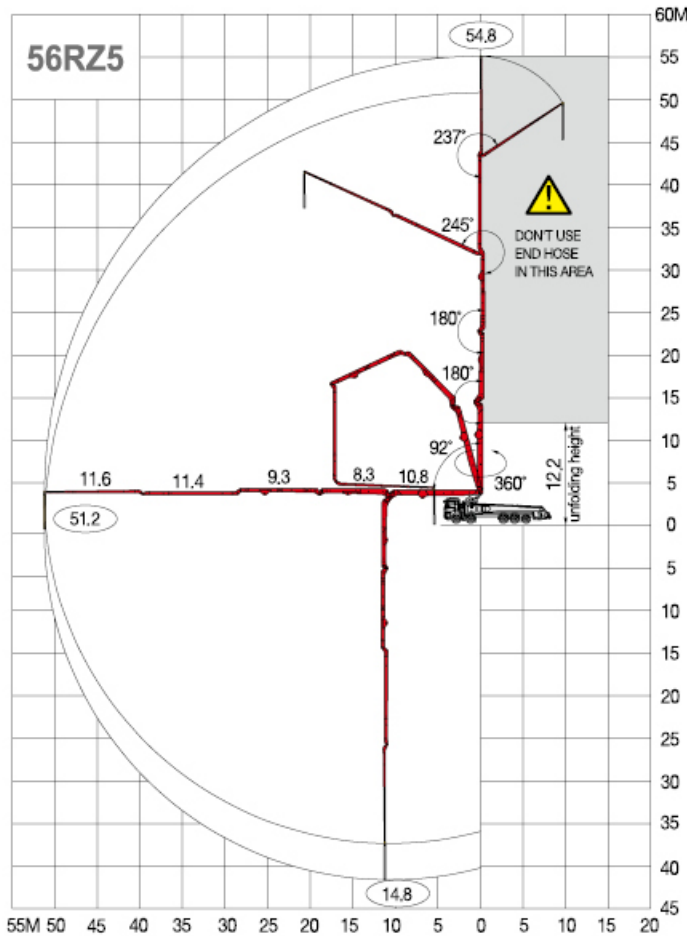




TCP-56RZ5.18



weight and dimension figures here are subject to change on various chassis option and additional axle application etc.



General Specification

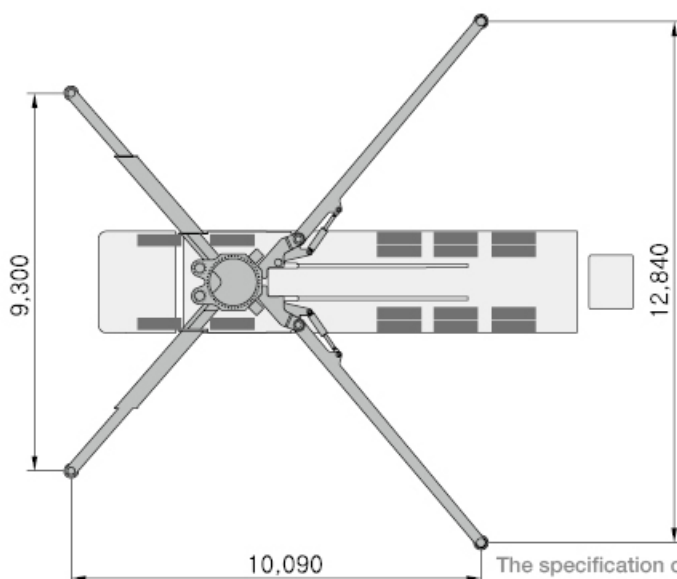
Length	14,280	mm
Width	2,500	mm
Height	3,980	mm
Front axle weight	18,670	kg
Rear axle weight	24,510	kg
Approx total weight	43,180	kg

Boom Specification

Folding type	5-section RZ	
Vertical height	54.8	m
Horizontal reach	51.2	m
Unfolding height	12.2	m
Reach depth	41.6	m
End hose Length	4	m
PipeLine	125	mm
1st section	10.6	m
2nd section	8.3	m
3rd section	9.3	m
4th section	11.4	m
5th section	11.6	m
Rotation	360	°
Outrigger spread - front	9.3	m
- rear	12.8	m

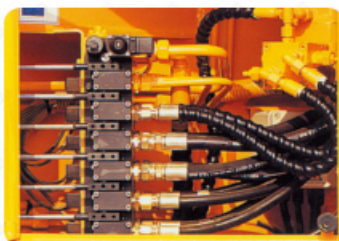
Pump Specification

Control system	open	
Output - rod	180	m ³ /h
- piston	120	m ³ /h
Pressure - rod	87	bar
- piston	130	bar
Delivery cylinder diameter	230	mm
Stroke length	2,100	mm
Strokes/min. - rod/piston	35/23	N
Main pump	Rexroth	
System pressure	350	bar
Hopper capacity	600	liter
Water Pump	20	bar
Water tank	500	liter



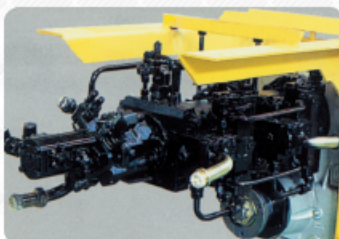
10,090

The specification can be changed without any prior notice



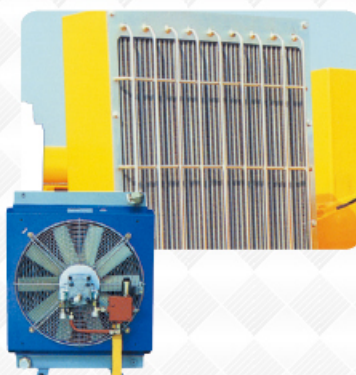
1 Operation Equipment

Application of the electronic proportional valve improves working efficiency through minimizing boom rolling and maximizing the flexibility of boom function at the same time.



2 Main Oil Pump

Easy overhaul and part supply. At any service centers you can buy the parts and get overhaul service at a low cost, consequently reducing the overhaul/maintenance cost.



3 Oil Cooler

Stability and durability of the hydraulic pressure system were improved with the application of the large-volume cooler.



4 Hydraulic Pressure Switching System

Application of integrated block simplifies the hydraulic lines and the electronic-controlled output control allows free manipulation with the wire/wireless controller.

Working efficiency becomes maximized with the hydraulic pressure switching backup system applied to prevent the temporary phenomenon that work is interrupted due to the sensing problem.



5 Core Pump

Application of the large-volume hydraulic cylinder lowered the hydraulic pressure and increased the output pressure.

And the durability was improved by applying the automatic grease lubrication feeder to the parts of potential abrasion.



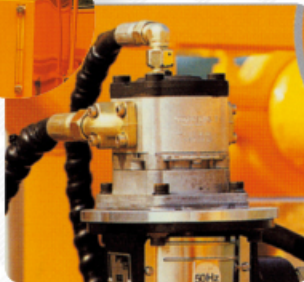
6 Air Grease Pump

Working efficiency is improved by application of the supplementary air grease pump to prevent the inflow of foreign substances and improve the inconvenience of manual injection when grease injection.



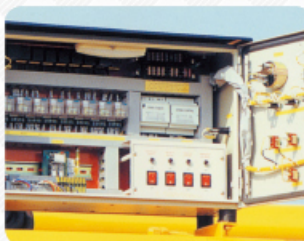
7 Water Pump

The multistage centrifugal pump equipped with the hydraulic motor washes out the remained concrete inside the concrete cylinder, hopper or pipeline by generating powerful water pressure with ultrahigh pressure.



8 Main Control Panel

The electrical equipment of centralized control type allows easy observation of all functions and convenient overhaul, remarkably reducing miscellaneous electrical system troubles.



9 Hopper

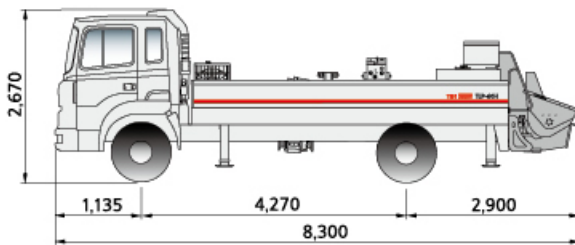
It is designed for easy pipe working and secures user's safety with the emergency switch installed to stop the stirrer by opening the hopper grid during work. And longer life span was obtained by applying the slide ring to prevent the inflow of mortar.



10 Abrasion-resistant parts of hard metal cemented carbide

Application of the abrasion board and ring made of hard metal cemented carbide material improved the durability five times compared to existing parts.



TLP-060H

General Specification

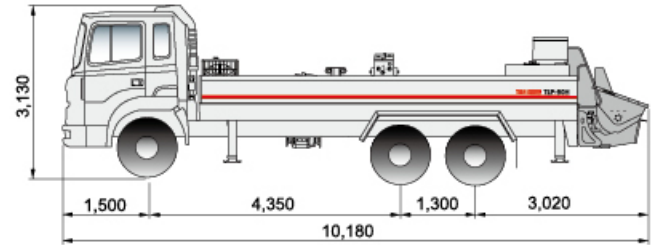
Length	8,300	mm
Width	2,500	mm
Height	2,670	mm

Outrigger Specification

Hyd' Vertical	
---------------	--

Pump Specification

Control system	close	
Output - rod	60	m ³ /h
- piston	40	m ³ /h
Pressure - rod	71	bar
- piston	106	bar
Delivery cylinder	200	mm
Stroke length	1,200	mm
Strokes/min. - rod	26	N
- piston	18	N
Main pump	Rexroth	
System pressure	350	bar
Hopper capacity	450	liter
Water Pump	20	bar
Hyd' tank	350	liter
Max size aggregate	63	mm
Outlet diameter	125	mm
Engine	177	kw


TLP-090H

General Specification

Length	10,180	mm
Width	2,500	mm
Height	3,130	mm

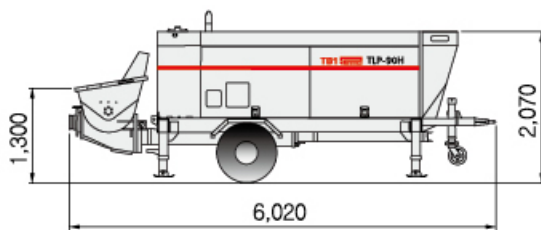
Outrigger Specification

Hyd' Vertical	
---------------	--

Pump Specification

Control system	close	
Output - rod	90	m ³ /h
- piston	60	m ³ /h
Pressure - rod	71	bar
- piston	106	bar
Delivery cylinder	ø 200	mm
Stroke length	1,600	mm
Strokes/min. - rod	29	N
- piston	20	N
Main pump	Rexroth	
System pressure	350	bar
Hopper capacity	650	liter
Water Pump	20	bar
Hyd' tank	350	liter
Max size aggregate	63	mm
Outlet diameter	125	mm
Engine	279	kw



TTP-090T

General Specification

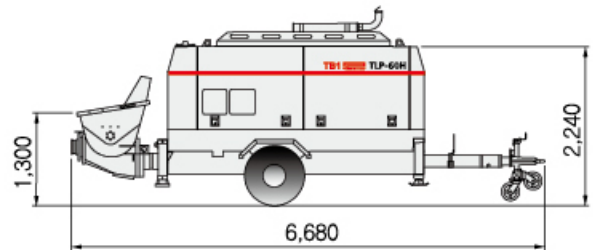
Length	6,020	mm
Width	2,180	mm
Height	2,070	mm

Outrigger Specification

Hyd' Vertical	
---------------	--

Pump Specification

Control system	close	
Output - rod	82	m ³ /h
- piston	55	m ³ /h
Pressure - rod	71	bar
- piston	106	bar
Delivery cylinder	ø 200	mm
Stroke length	1,600	mm
Strokes/min. - rod	27	N
- piston	18	N
Main pump	Rexroth	
System pressure	350	bar
Hopper capacity	650	liter
Water Pump	20	bar
Hyd' tank	350	liter
Max size aggregate	63	mm
Outlet diameter	125	mm
Engine	151	kw


TTP-110T

General Specification

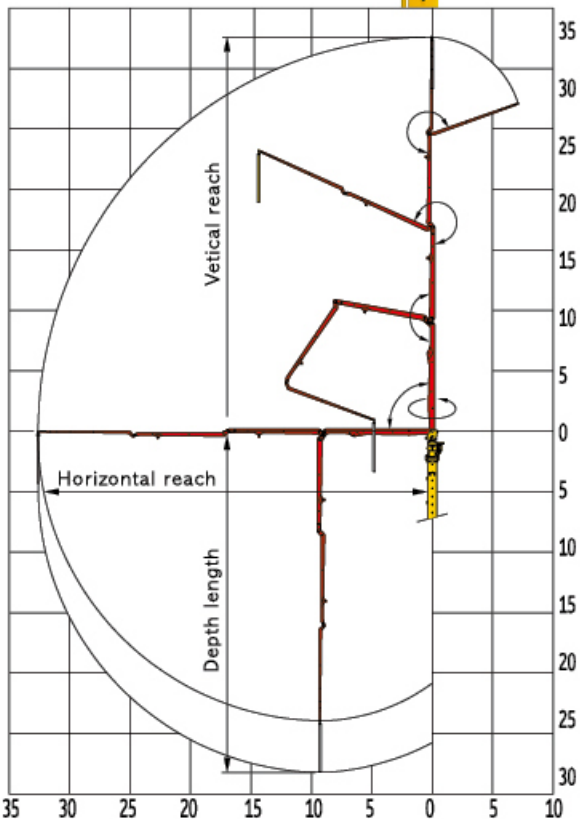
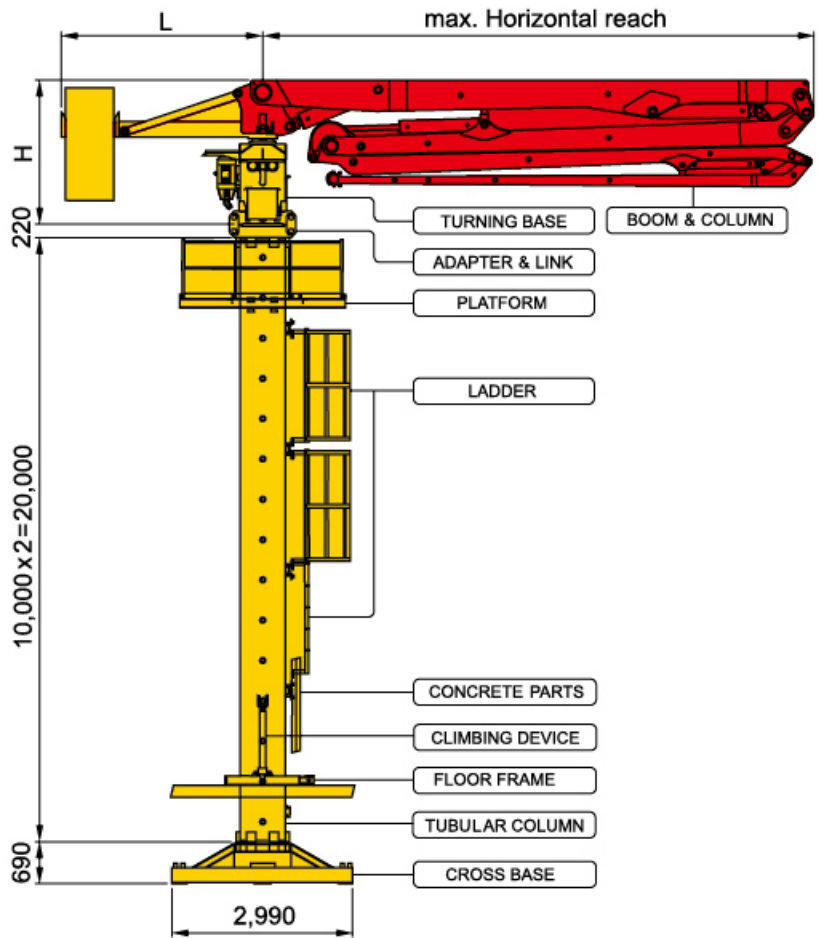
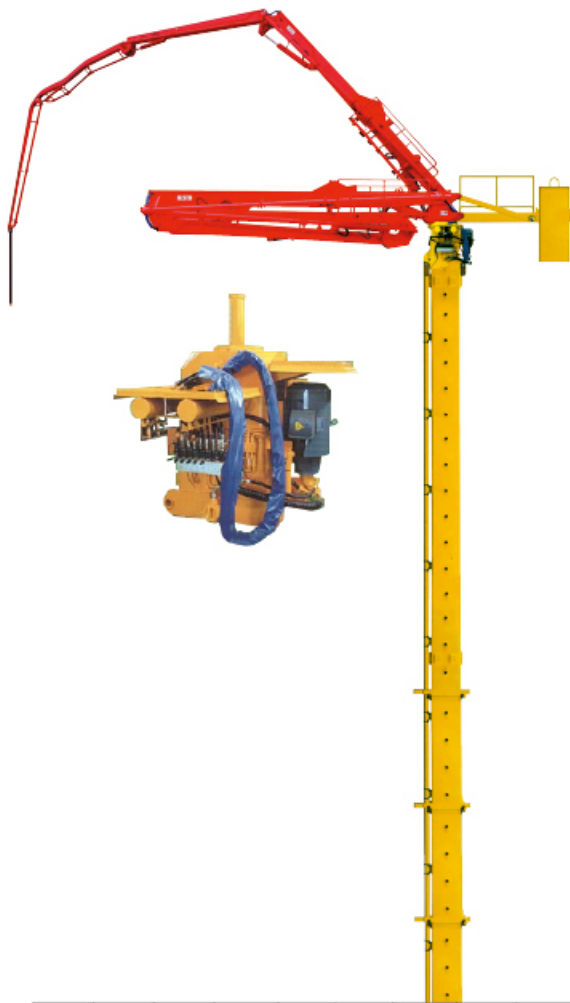
Length	6,680	mm
Width	2,180	mm
Height	2,240	mm

Outrigger Specification

Hyd' Vertical	
---------------	--

Pump Specification

Control system	close	
Output - rod	105	m ³ /h
- piston	71	m ³ /h
Pressure - rod	153	bar
- piston	224	bar
Delivery cylinder	ø 200	mm
Stroke length	2,100	mm
Strokes/min. - rod	26	N
- piston	18	N
Main pump	Rexroth	
System pressure	350	bar
Hopper capacity	650	liter
Water Pump	20	bar
Hyd' tank	350	liter
Max size aggregate	63	mm
Outlet diameter	125	mm
Engine	294	kw



Model	TPB-24ST	TPB-29ST	TPB-33ST
-------	----------	----------	----------

Boom Specification

Boom ass'y		4-Z boom	4-Z boom	4-Z boom
Horizontal reach	m	23.7	28.7	32.6
Max. depth length	m	21.0	25.0	27.9
End hose	m	4	4	4

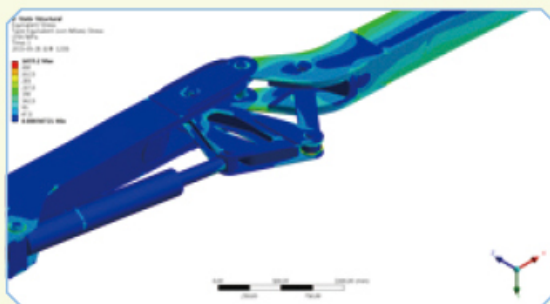
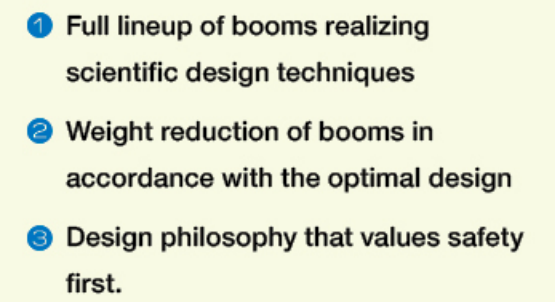
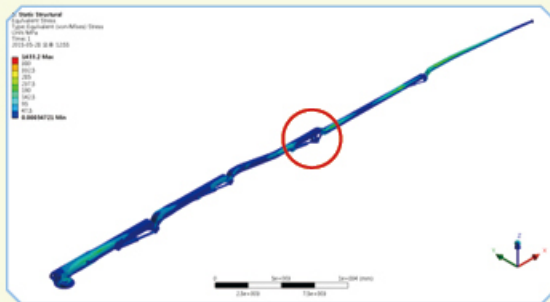
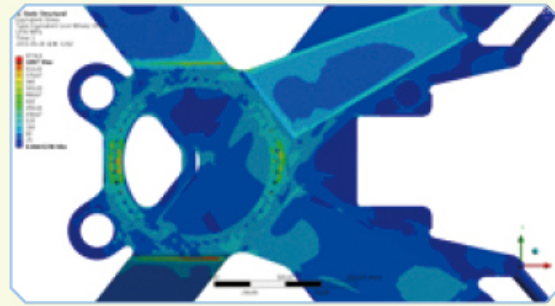
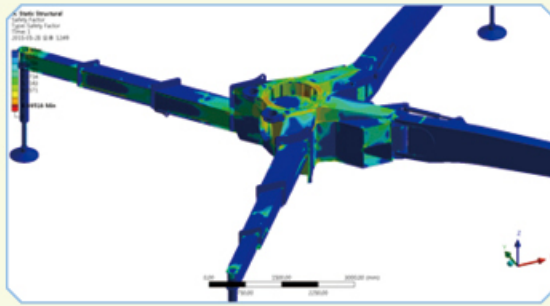
General Specification

Tubular column		10m x 2ea	10m x 2ea	10m x 2ea
Pipe size	mm	125	125	125
Rotation degree	°	370	370	370
Generating power	kw	15	22.5	22.5
Main power	V/Hz	380/60	380/60	380/60
Boom pump		Rexroth	Rexroth	Rexroth
Remote control	cable	40M	40M	40M
	radio	Hetronics	Hetronics	Hetronics
Counter weight(Optional)	kg	-	2500	6900
End hose	std	4M	4M	4M

Available with counter-weight or without counter-weight
The specification can be changed without any prior notice



The proven design and strict quality control.

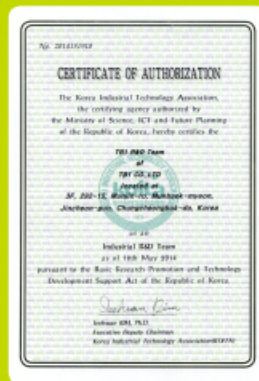


- ① Full lineup of booms realizing scientific design techniques
- ② Weight reduction of booms in accordance with the optimal design
- ③ Design philosophy that values safety first.

- ① TB1 verifies the design of all Structure for Concrete Pump with FEM(Finite Element Method), and further revalidates the booms in the field.
- ② All the Structure for Concrete Pump of TB1 adopt the design techniques based on scientific calculation and experience.



VENTURE



R & D TEAM



ISO



MAIN-BIZ

TB1 LINE-UP

TCP-21ZX4.10

TCP-28ZX4.10

TCP-33ZX4.15

TCP-36RX4.15

TCP-37ZX4.15

Placing Boom
TPB-24ST
29ST
33ST

TCP-40RX4.15

TCP-40RZ5.15

TCP-43ZR5.15

TCP-49RZ5.15

TCP-52RZ5.15

TCP-52RZ6.15

TCP-56RZ5.18

Trailer Pump **TTP-090T/110T**

Line Pump **TLP-060H/090H**

Memo

TB1  M.J.S

 **TB1 CO.,LTD.**

Address. #292-15, Munjin-ro, Munbaek-myun, Jincheon-gun, Chungbuk, Korea

TEL : +82-43-532-3910 FAX : +82-43-532-3911 E-mail : moleea@hanmail.net

www.tb1.kr